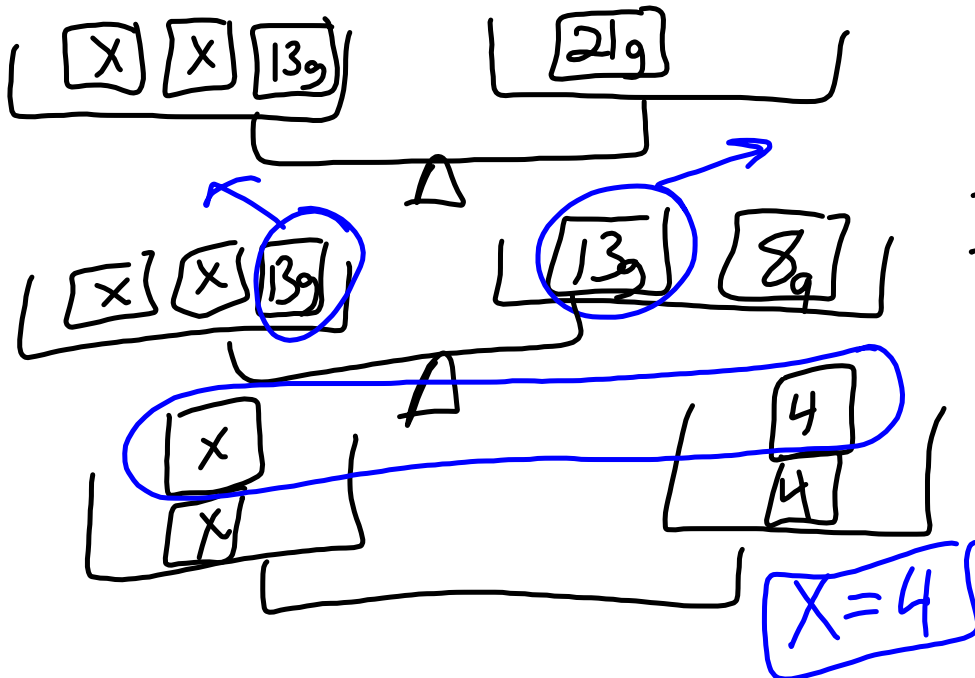


$$2x + 13 = 21$$



$$\begin{array}{r} 21 \\ -13 \\ \hline 8 \\ 8 \div 2 \end{array}$$

$3x - 10 = 20$

Legend:

- \square +1
- \blacksquare -1
- Large Rectangle x
- Wavy Rectangle -1

$x = 10$

$$3(2x+4)$$

$$6x + 12$$

$$3(9x+5)$$

$$27x + 15$$

P. 340

Exempl 1

$$7(c+2)$$

	c	2
7	$7c$	14

$$7c+14$$

$$7(c+2)$$

$$7c+14$$

$$2(x+10)$$

	x	10
2	$2x$	20

$2x+20$

$$2(x+10)$$

$$2x+20$$