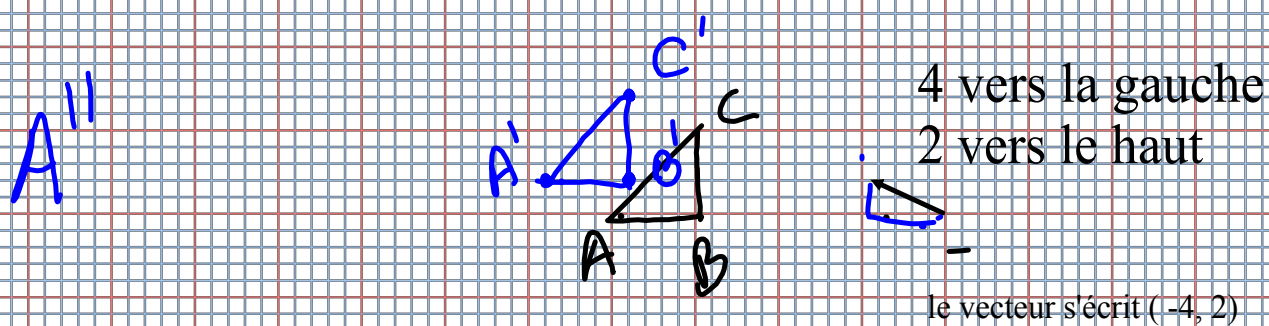
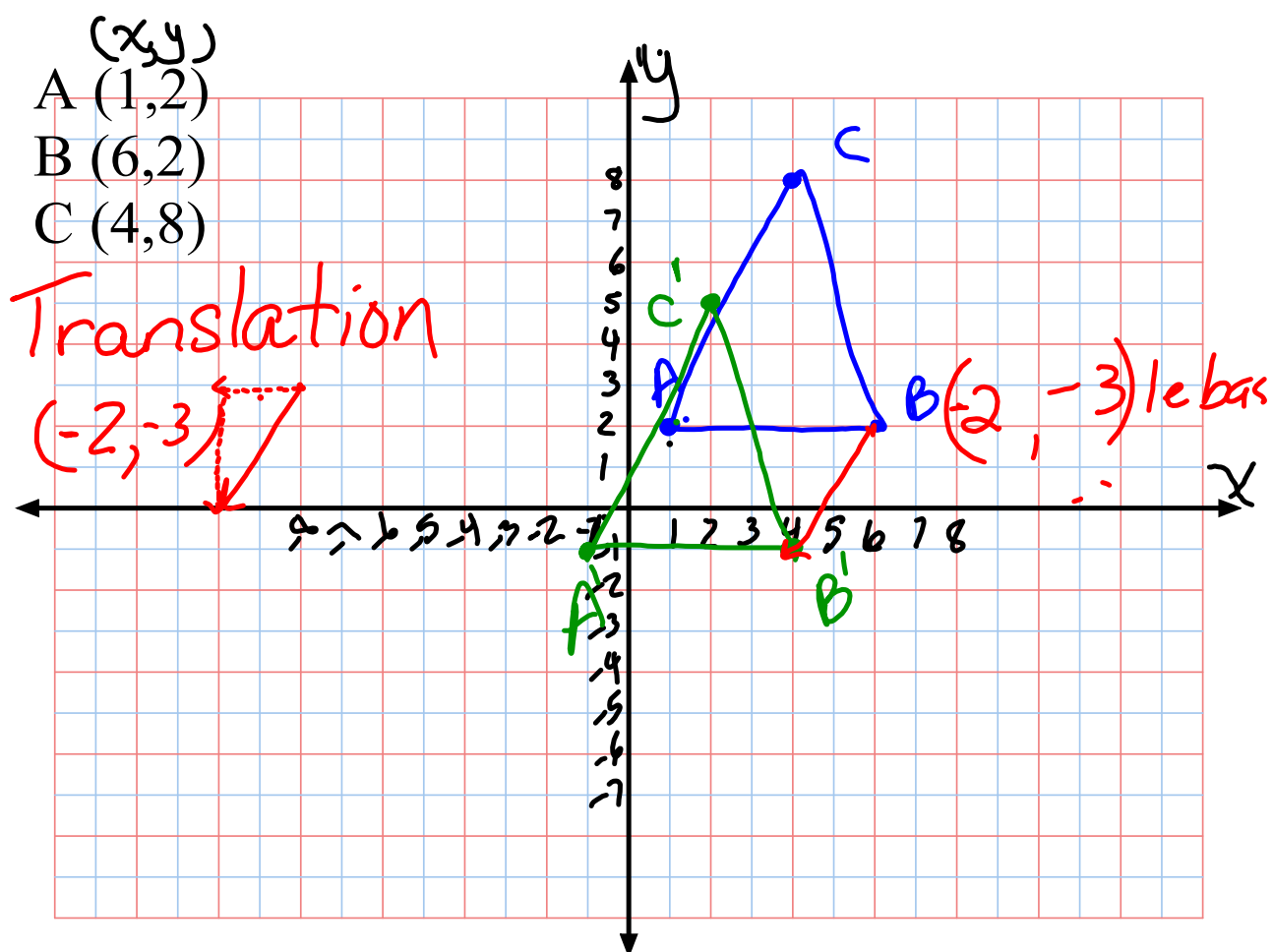


Une translation est un déplacement de la figure.

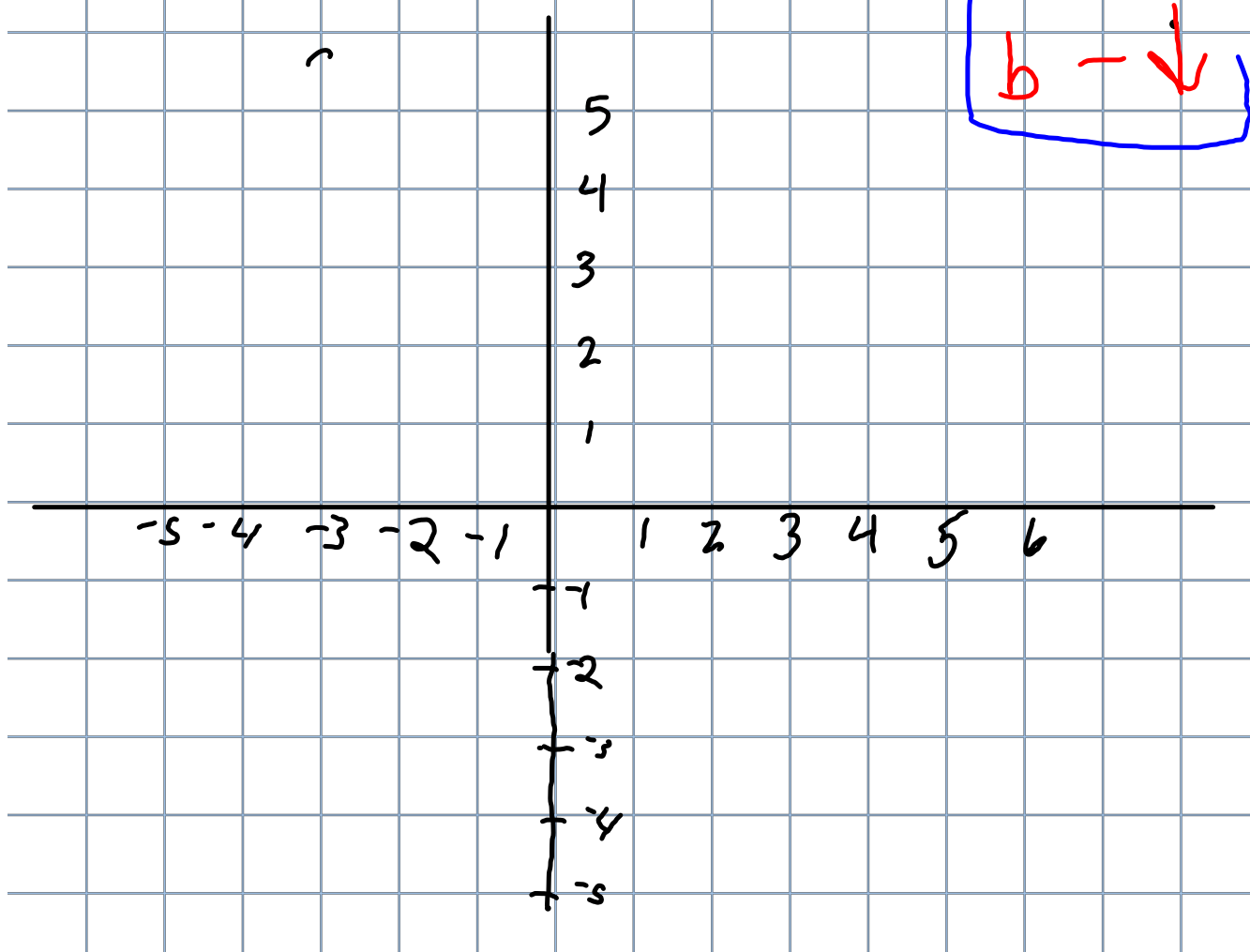
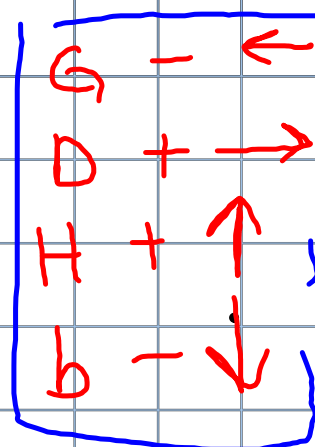
On peut décrire la translation par une flèche de translation.





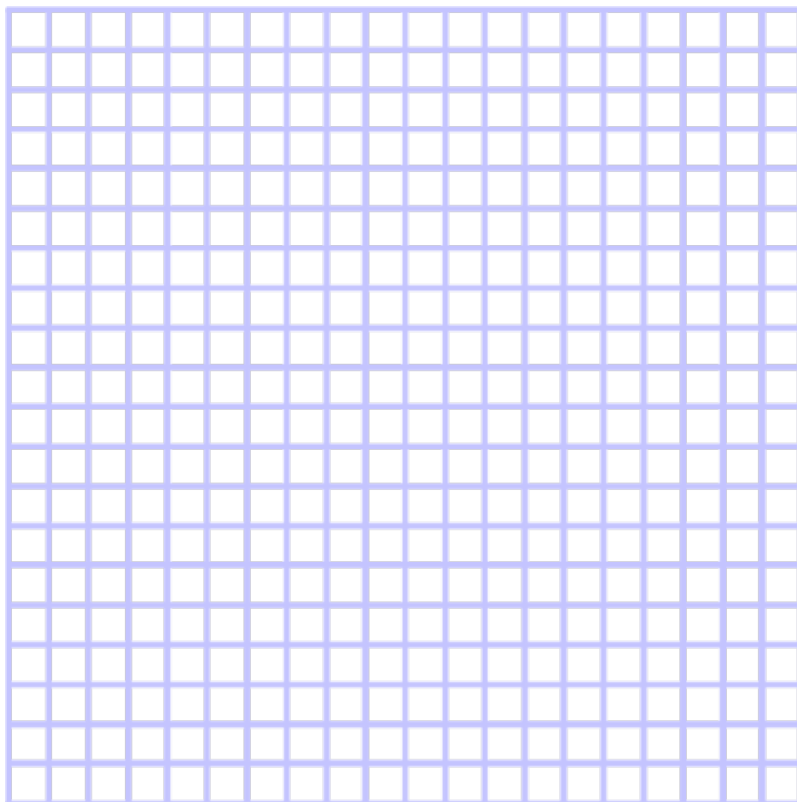
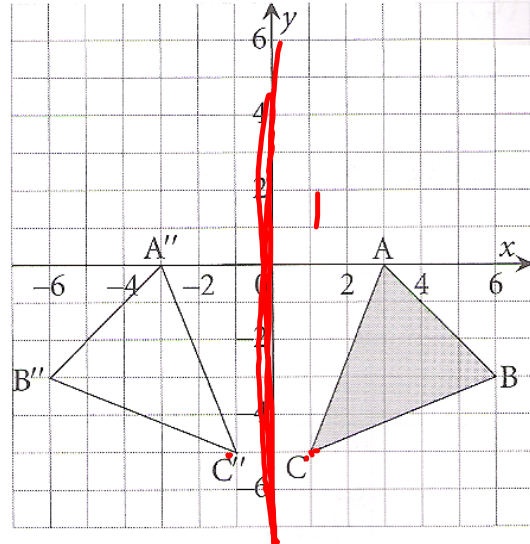
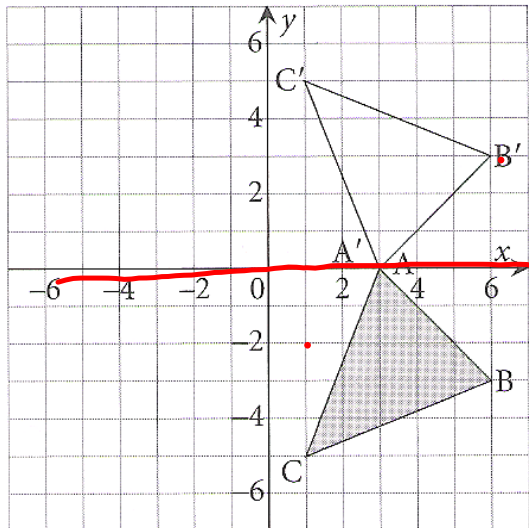
Représente sur du papier quadrillé.

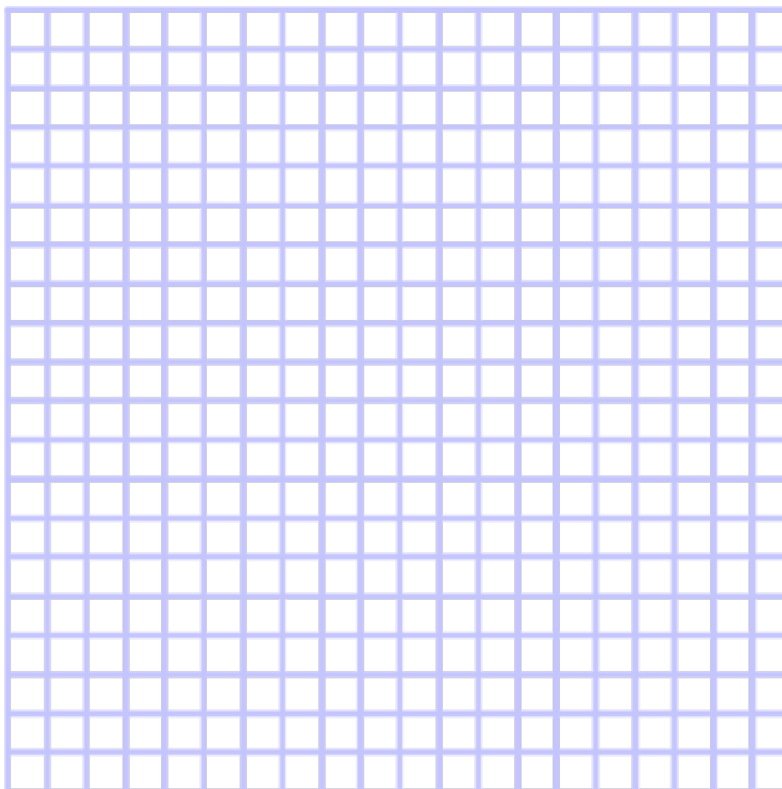
- a) (2,3) b) (D5, b4) c) (G3, H5) d) (4, -2)



Les Réflexions (les rabattements) : Transformation qui permet de faire coïncider tous les points de 2 figures congrues.

Une réflexion crée une image en miroir d'une figure





322 Q1

Q2 Q4
⋮

.

