

$$\pi = 3,14$$

$$C = \pi d$$

$$C = 2\pi r$$

d = diamètre

r = rayon

$$d = 2r$$

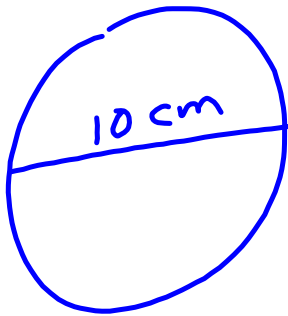
$$r = \frac{d}{2} \dots$$

La circonférence
 → distance autour
 d'un cercle
 → périmètre d'un
 cercle.

P.136

Q1

a)



$$C = \pi d$$

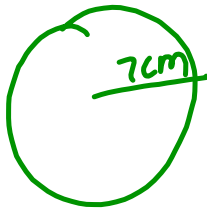
$$C = 3,14(10\text{cm})$$

$$C = 31,4 \text{ cm}$$

estime

$$\begin{array}{r} 3(10) \\ \underline{30} \end{array} \checkmark$$

B



$$C = 2\pi r$$

$$= 2(3,14)(7\text{cm})$$

$$= 43,96\text{cm}$$

$$\begin{array}{r} 2(3)(7) \\ \underline{42} \end{array} \checkmark$$

c)



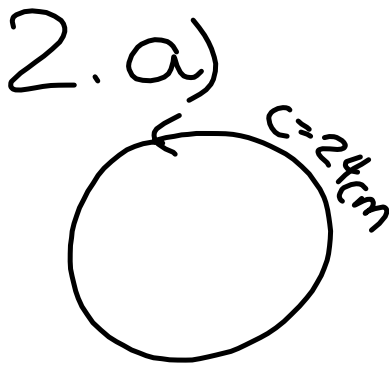
$$C = \pi d$$

$$= (3,14)(15\text{cm})$$

$$= 47,1$$

$$\begin{array}{r} 3(15) \\ \underline{45} \end{array} \checkmark$$

Pour estimer arrondir π à 3.



$$c = \pi d$$

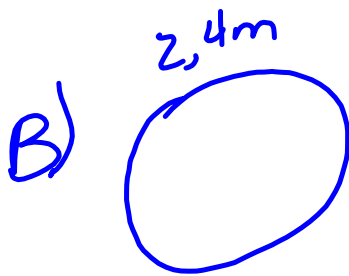
$$\frac{24 \text{ cm}}{3,14} = \frac{3,14 d}{3,14}$$

$$r = \frac{d}{2}$$

$$r = \frac{7,64}{2}$$

$$7,64 = d$$

$$r = 3,82$$



$$c = \pi d$$

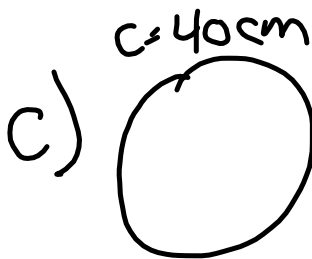
$$\frac{2,4 \text{ m}}{3,14} = \frac{3,14 d}{3,14}$$

$$r = \frac{d}{2}$$

$$r = \frac{0,76}{2}$$

$$d = 0,76$$

$$r = 0,38 \text{ cm}$$



$$c = \pi d$$

$$\frac{40 \text{ cm}}{3,14} = \frac{3,14 d}{3,14}$$

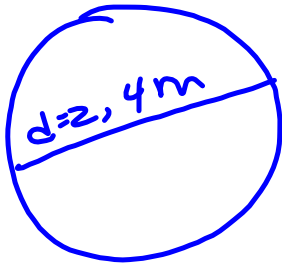
$$r = \frac{d}{2}$$

$$r = \frac{12,7 \text{ cm}}{2}$$

$$d = 12,7 \text{ cm}$$

$$r = 6,35 \text{ cm}$$

P.136
Q4.



$$C = \pi d$$

$$C = 3,14 (2,4m)$$

$$C = 7,53 m$$

B)

$$\begin{array}{r}
 7,53 \\
 \times 4,53 \\
 \hline
 2259 \\
 + 37650 \\
 301200 \\
 \hline
 34,1109
 \end{array}$$

$$C = 4,5 \text{ m}$$

$$d = 2r$$

$$C = 2\pi r$$

$$C = 2\pi r$$

$$4,5 \text{ m} = 2(3,14)r$$

$$\frac{4,5 \text{ m}}{6,28} = \frac{\cancel{6,28} r}{\cancel{6,28}}$$

$$0,71 \text{ m} = r$$

$$\rightarrow \times 100 \quad \boxed{0,712}$$

$$\boxed{71 \text{ cm}}$$