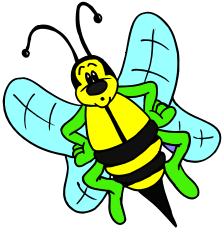


Gretna Green Elementary Home & School SPELL-A-THON 2014



Your child will participate in the 6th annual Gretna Green Home & School Spell-A-Thon by studying the attached list of words. They are to collect pledges on the following page and keep their pledge sheets until Friday, April 25th when all money is due. We have created a great list of prizes and awards to encourage the children to study hard and have fun collecting pledges.

Funds raised from the Spell-A-Thon will go towards a variety of projects that will help make Gretna Green a great place to learn!

AWARDS & PRIZES

*Top Fundraiser—Tablet
2nd place—Bicycle
3rd place—Family Pass to Magic Mountain
& a \$50.00 Gas Card*

PLEDGE EARNERS

FOR EVERY \$20.00 YOU RAISE, YOUR NAME WILL BE PUT IN A DRAW FOR A MOVIE PASS. THE MORE YOU RAISE THE BETTER YOUR CHANCE OF WINNING A PRIZE!!

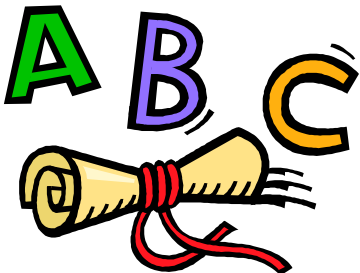
CLASSROOM PRIZES

A pizza party (water included) will be awarded to the top fundraising class in K-2 and the top fundraising class in 3-5!



DATES TO REMEMBER

April 23-	TEST DAY!!
April 25-	PLEDGE \$\$\$ DUE!!
April 30 -	PRIZE ASSEMBLY!!



If you have any questions, please call the school at 778-6099

